

• CHAPTER • 8

Blowing on Soap to Make "Aloha" Flowers with Cold Process Soap



Blowing on soap is a wonderful technique for blending colors to produce stunning artistic soap. It allows you to achieve effects impossible with any other method. Clouds in the sky are produced by the wind blowing particles, so you might expect that blowing on soap could achieve realistic looking clouds. In fact it does! I find that it also produces a watercolor painting look. In this chapter I explore blowing on soap to produce artistic flowers.



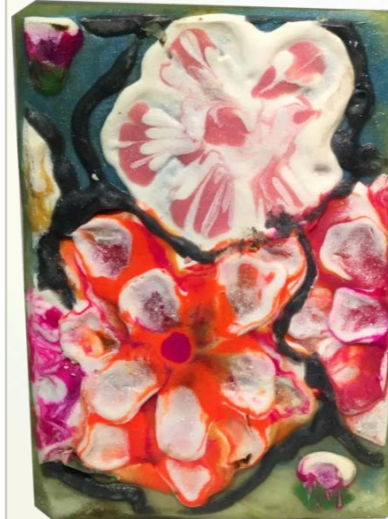
The soap must be very liquid to a little thick in order for this technique to work. I brought the soap to an emulsion before adding it to the colors. I did not add any fragrance to the colors. This prevented them from getting too thick too quickly, since my essential oils and fragrance oil accelerated trace. While some people use a straw to blow, I have found that an airbrush system is easier to control and keeps you from passing out on long projects :D. The links to the airbrush system can be found in Chapter 7.

• COLORS AND FRAGRANCE •

THE COLORS

1. 1/2 tsp Neon Orange
2. 1/8 tsp Green Oxide
3. 1/2 tsp Yellow Vibrance
4. 1/2 tsp Emerald Green
5. 1/2 tsp Celedon green
6. 1/2 tsp Sky Blue
7. 1/2 tsp Amaranth pink
8. 1 tsp Titanium dioxide
9. 1/2 tsp Raspberry Red
10. 1/2 tsp Orange Vibrance
11. 1 tsp Nocturnal Black
12. 1.2 tsp Neon Purple
13. 1/2 tsp gray

I added 1/4 tsp Sweet Almond Oil to all of the colors.



The Pitcher contains 1.30 oz of Litsea Cubeba Essential Oil plus 0.65 oz of Organic Lemongrass Oil plus 0.35 oz of Organic Jojoba Oil. **The cup** contains 0.5 oz of Snickerdoodle Fragrance Oil.

If you mouse over the image or the items in the list, and right click on the links, you can open them in a new window or tab.

THE FRAGRANCE:

Lemon Lover's consists of Litsea Cubeba and Lemongrass Essential oils combined with Snickerdoodle fragrance oil. It does speed trace a bit. The Snickerdoodle speeds trace the most.

You really don't need to use all of these colors. You could just choose a couple of shades of pink, or orange or whatever colors you'd like for the flowers. I just wanted to explore different combinations and have a bright Hawaiian shirt look.

I added 1/4 teaspoon of Sweet Almond Oil to all the colors. I do this to keep the colors from sinking in the base. It is not quite as important for this soap, since the base gets thick fairly quickly. But in general, I like to keep the colors about the same specific gravity as the base so that they don't sink.

I made 3 separate titanium dioxide cups because white tends to thicken sooner than the other colors. I only had to use 2 of the white cuts for this soap. When the first white became too thick, I added soap that I had put aside to the other white. I remained liquid enough to apply until the end.



The Hawaiian soap flowers were blown on a fairly thick soap base. This technique would be interesting to try on newly made bars of soap as well. In that case, you could blow soap on the tops and over the edges to give a very unique and beautiful look.

I also tried this technique using a base soap that was much more liquid. It gives a slightly different response and look. You can see me make this soap in the second video of making birthday party favors listed below.

THE SUPPLIES NEW TO THIS SOAP

1. Rotating Tray
2. Crafter's Choice mold



• SETUP AND SUPPLIES •



SUPPLIES

The supplies I use to make this soap are shown here. I have a link to the source of the new items. Mouse over the image or the list to highlight the link. Then right click the link to open in a new tab or window. The mold has little indentations on the bottom which help to guide as you cut the slab into 12 bars. My soaps made with this mold are usually about 4.5 oz each. The actual Lazy Susan I have in the picture is 19 inches and found [here](#), but the one I have a link to would work just as well and is much cheaper.

**Right click the image to open the following
video in new tab or window:**



Right click a link below to open in a new tab or window:

Coming soon... Chapter 9

Table of Contents

Go to my Website Homepage

Bible Bite for this chapter John 2:12-22

Right click the image to open another Flower Blowing Art Soap video in new tab or window:

"Happy Birthday" Cold Process Soap Party Favors



This is a fun video I made of soap party favors crafted for a special birthday. The soap resembles a watercolor painting. This is not an instructional video per se, but you can see how a much more liquid soap base behaves using the blowing on soap technique.